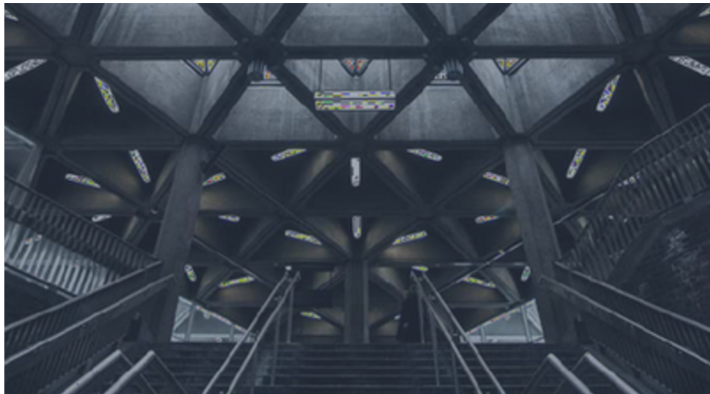


DYNOFORCE PROFILE

Dynoforce designs, supplies, and installs one of the most comprehensive ranges of Parking Management and Hostile Vehicle Mitigation (HVM) solutions globally, supported by a full suite of specialized professional services.

Our team of engineers and technical experts deliver custom-designed security solutions, including crash-rated bollards, automatic and manual crash-rated gates, non-crash-rated perimeter systems, and pedestrian access control systems. Dynoforce products are trusted and installed across high-security sites around the world.

Headquartered in India with a strong domestic presence and supported by global partners and distributors, Dynoforce serves clients across international markets with end-to-end security solutions built to global standards.



Website: www.dynoforce.in

Email: info@dynoforce.in



PRODUCT RANGE:

- Crash Rated Bollard - Fixed
- Crash Rated Bollard - Automatic/Retractable
- Non Crash Rated Bollards
- Parking Bollards
- Crash Rated Automatic/Manual gates
- Non crash Rated Automatic/Manual gates
- Pedestrian Gates
- Automatic/Manual Boom Barrier
- Crash Rated Wall

Crash Rated Fixed Bollard

DF-SMFB-30-P1

Dynoforce Crash Rated Fixed Bollards are tested to deliver uncompromised perimeter protection in high-risk areas. Designed to stop a 7.2-ton vehicle traveling at 48 km/h with a P1 penetration rating (0.3m), these bollards offer an effective and permanent solution against hostile vehicle intrusion.

Certified through ARAI and HORIBA MIRA crash testing, they comply with ISO 22343 and IWA 14-1 standards. Despite impact, the bollards remained operational—showcasing their reliability in real-world threats.

Features and Benefits

- **Crash Rated Performance:** Stops a 7.2-ton truck at 48 km/h with only 0.3 m penetration (P1).
- **Certified & Tested:** Complies with ISO 22343 and IWA 14-1 standards, and tested by Horiba MIRA and ARAI.
- **Post-Impact Functionality:** Bollards remain fully operational even after crash impact.
- **Robust Construction:** Made from high-strength steel for durability and resilience.
- **Customizable Aesthetic:** Optional stainless-steel decorative sleeves for enhanced visual integration.
- **Multiple Configuration:** Available in array sets of 4 bollards for wider coverage.
- **Corrosion Resistant:** Built to endure harsh weather and environmental conditions.
- **Low Maintenance:** Minimal upkeep due to rugged materials and anti-rust finishes.



Key Features

- **Material:** High Grade Steel
- **Bollard Height Above Ground:** 1000 mm
- **Diameter:** 219 mm
- **Finish:** stainless steel sleeve or powder-coated in customizable RAL colors
- **Installation:** Fixed in a concrete foundation

Technical Dimensions

- **Height Above Ground:** 1000 mm
- **Diameter:** 219 mm



DF-SMFB-30-P1

Installation and Maintenance

- Foundation Requirements: Requires a concrete foundation for stability.
- Site Preparation: Standard groundwork preparation necessary.
- Maintenance: Minimal maintenance due to corrosion-resistant materials and finishes.

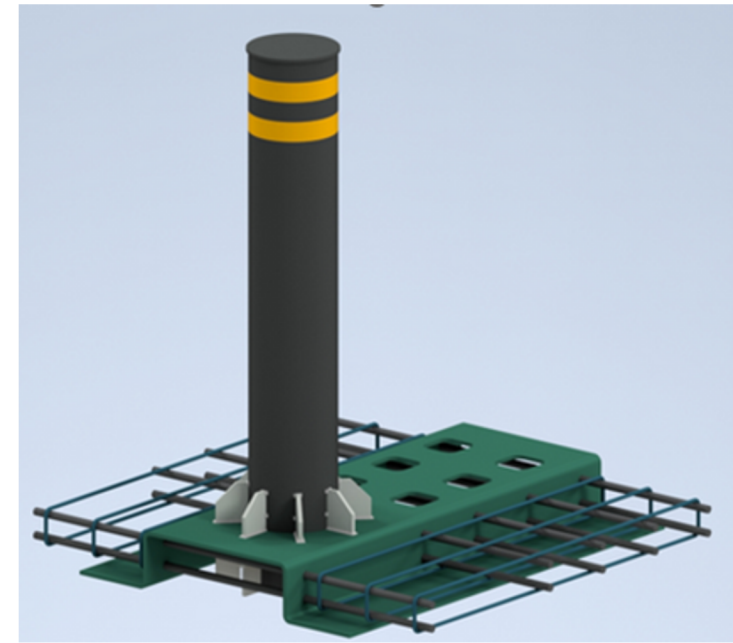
Note:

- For detailed technical specifications, contact DynoForce's technical team



DYNOFORCE

DF-SMFB-30-P1



Applications

- Military Zones & Defence Bases
- Government Installations & Embassies
- Data Centres & Critical Infrastructure
- Airports, Ports & High-Security Facilities
- Financial Districts & Corporate HQs

